



# MONTPELIER WALK, LONDON, SW7

£ 1,500 Per Week ( £ 6,500 PCM)

## FEATURES

- Period house with contemporary styled interior including hardwood flooring
- Newly decorated 3 bedroom House in Knightsbridge village
- Presented in immaculate decorative order
- Large eat-in kitchen with doors into the garden
- Master suite with dressing area and en-suite bathroom
- Close proximity to Harrods and Hyde Park
- 0.4 miles to Knightsbridge underground station

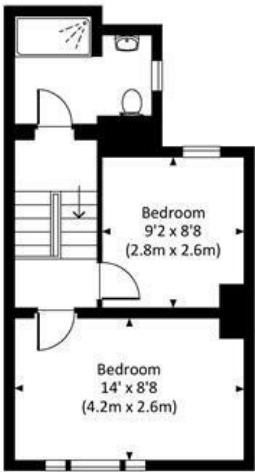
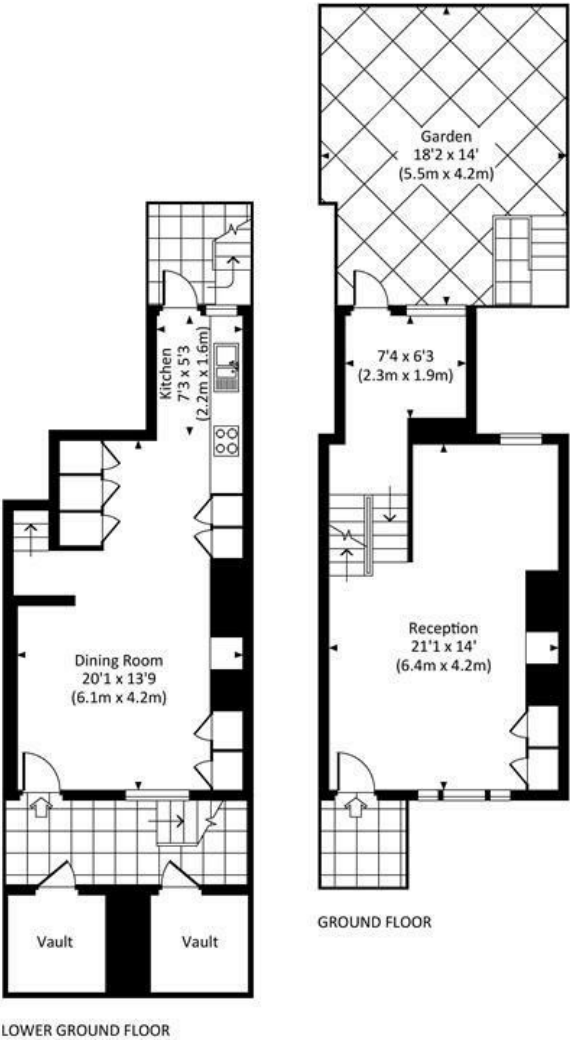


3 2 2 D

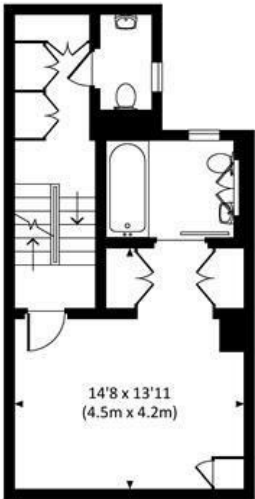
Maskells

Energy Efficiency Rating		
	Current	Potential
Very energy efficient - lower running costs		
(92 plus) <b>A</b>		
(81-91) <b>B</b>		
(69-80) <b>C</b>		
(55-68) <b>D</b>		
(39-54) <b>E</b>		
(21-38) <b>F</b>		
(1-20) <b>G</b>		
Not energy efficient - higher running costs		
EU Directive 2002/91/EC		
England & Wales		

**MONTPELIER WALK, SW7**  
 Approx. gross internal area 1351 Sq Ft. / 125.5 Sq M.  
 Approx. gross internal area 1422 Sq Ft. / 132.1 Sq M. Inc. Vaults



SECOND FLOOR



FIRST FLOOR

Call us on  
**0207 581 2216**  
[lettings@maskells.com](mailto:lettings@maskells.com)  
[www.maskells.com](http://www.maskells.com)  
 Council Tax Band - D  
 EPC - D

A charming, recently renovated and immaculately presented 3 bedroom Knightsbridge Village house, with hardwood flooring, new carpets and a large modern eat-in kitchen. Extending to approx 1,400 Sq. ft of internal accommodation, the house is well prorortioned with 2 reception rooms, a study area and charming private rear garden. Located moments from Brompton Road and Harrods, as well as Knightsbridge underground and only a 5 minute walk from Hyde Park. EPC D.

All potential tenants should be advised that administration fees may be applicable when renting a property. Please contact us for more details of these charges. Maskells are members of Propertymark the leading membership body for property agents. We are part of the Propertymark Client Money Protection scheme and a member of The Property Ombudsman Scheme (approved by the Office of Fair Trading) and subscribe to its Codes of Practice for Letting Agents.

Agents Note: Whilst every care has been taken to prepare these particulars, they are for guidance purposes only. All measurements are approximate and are for general guidance purposes only and whilst every care has been taken to ensure their accuracy, they should not be relied upon and potential buyers are advised to recheck the measurements.

